**POLE SHAFT:**

Conforms to ASTM A595 and is supplied in 7 and 11 gauge. The RTS series shaft is square in cross section having flat sides, radiused corners and a uniform taper of approximately 0.11 inches per foot of length.

**ANCHOR BASE:**

Structural quality ASTM A36

**ANCHOR BOLTS:**

Carbon steel conforming to AASHTO M314 grade-55 or ASTM F1554 grade -55. Bolts are "L" shaped and are galvanized a minimum of 12" on the threaded end. Each pole includes four bolts, each with two nuts and two flat washers.

**BASE COVERS (standard):**

Two-piece cover fabricated from ABS plastic or steel and secured together with two fasteners.

**HANDHOLE:**

A covered reinforced handhole is supplied either in 3" x 5" rectangular or 4" x 6.5" oval, depending on pole size.

**HARDWARE:**

All structural fasteners are galvanized high strength carbon steel. All other fasteners are galvanized or zinc plated or stainless steel.

**STANDARD FINISH:**

Galvanized or powder coated. Consult factory for standard or custom colors.

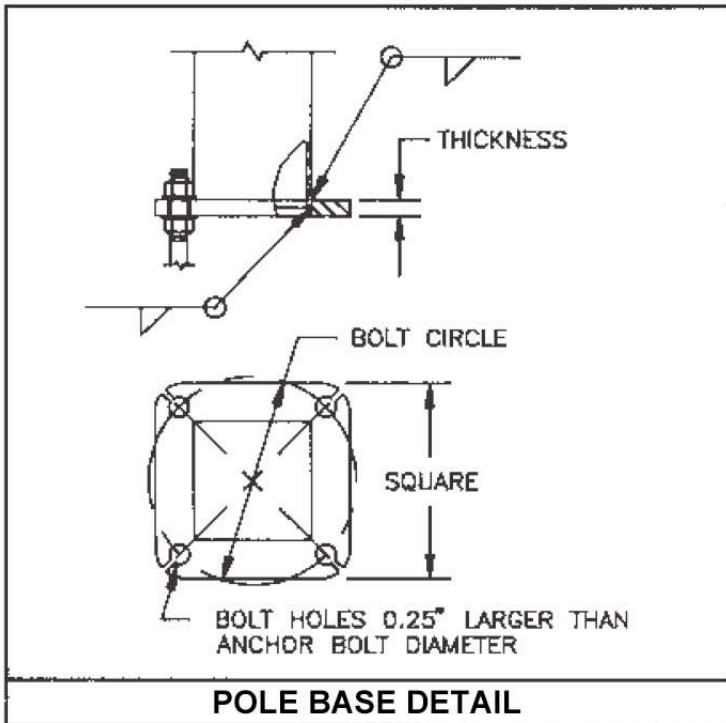
**MOUNTINGS OPTIONS:**

Tenons-standard 2 3/8" x 4" or 4" x 6" or removable pole caps used in conjunction with side mounted fixtures.

*Serving our customers and  
the industry with quality  
products since 1973.*

# Square Tapered Steel Light Poles

POLE CATALOG NUMBER	NOMINAL MOUNTING HEIGHT (ft)	TOP O.D. INCHES	BASE O.D. INCHES	WALL THK. GAUGE	BASE PLATE SQUARE (IN)	BASE PLATE THK. (IN)	BOLT CIRCLE (IN)	ANCHOR BOLTS (IN)	Max EPA AT: (Allows for 1.3 Gust Factor)		
									80 MPH	90 MPH	100 MPH
STS20-3153C	20	3.05	5.25	11	10.75	0.75	10.75	1X36X4	18.0	13.8	10.7
STS20-3355D	20	3.30	5.50	7	11.00	1.00	11.00	1X36X4	30.5	24.0	19.0
STS25-3360C	25	3.25	6.00	11	11.50	0.88	12.00	1X36X4	16.8	12.6	9.5
STS25-3764D	25	3.66	6.41	7	11.88	1.25	12.50	1X36X4	28.5	22.5	18.2
STS30-3164C	30	3.11	6.41	11	11.88	0.88	12.50	1X36X4	13.6	9.8	7.0
STS30-3164D	30	3.11	6.41	7	11.88	1.25	12.50	1X36X4	23.6	17.9	13.7
STS30-3871D	30	3.83	7.13	7	12.63	1.25	13.50	1X36X4	27.4	21.6	17.3
STS35-3068C	35	2.96	6.81	11	12.25	0.88	13.00	1X36X4	10.7	7.3	4.8
STS35-3371D	35	3.28	7.13	7	12.63	1.25	13.50	1X36X4	23.4	17.4	13.0
STS35-4079D	35	4.03	7.88	7	13.38	1.25	14.50	1X36X4	25.7	18.8	13.8
STS39-2972C	39	2.92	7.18	11	12.63	0.88	13.50	1X36X4	8.6	5.4	3.0
STS39-2971D	39	2.87	7.13	7	12.63	1.25	13.50	1X36X4	19.3	14.2	10.4
STS39-4588D	39	4.49	8.75	7	14.25	1.50	15.75	1.25X42X6	26.1	20.6	16.2
STS45-2979D	45	2.93	7.88	7	13.38	1.25	14.50	1X36X4	16.0	11.1	7.4
STS45-3888D	45	3.80	8.75	7	14.25	1.50	15.75	1.25X42X6	23.5	16.6	11.4
STS50-3388D	50	3.31	8.81	7	15.50	1.25	16.00	1.25X42X6	19.4	13.2	8.7



- \* 3" x 5" nominal hand hole – all others 4" x 6.5" nominal.
- Design showing two shaft gauges indicates structure is provided as a two-piece, field assembled, unit. Heavier gauge is the bottom section.
- Maximum weight and EPA values are based on top mounted luminaires and/or brackets having a centroid 2'-6" above the nominal mounting height.

Dimensions and Specifications subject to change without notice.