

17" Transformer Base 13"-15" Lower Bolt Circle



The transformer base is cast from 356 alloy aluminum and heat treated to a T6 condition and is accepted by the Federal Highway Administration Department of Interior, as meeting the requirements of AASHTO "Standard Specifications for Structural Supports for Highway Signs, Luminaires and Traffic Signals" for use on federal aid projects. The acceptance is relative to the breakaway characteristics in a range of 20 to 60 MPH impact.

MODEL: 07R1315B17

For use with 7" poles.

MODEL: 10R1315B17

For use with 10" poles up to 0.188" wall.

MODEL: 08R1315B17

For use with 8" poles.

Contact NAFCO if heavier plates are needed

CAUTION

TB1-17-1985 AASHTO

Before installation, user should consult with authorized distributor regarding user's proposed application, load requirements and installation methods. Failures can result from user's misapplication or improper installation.

To approach optimum static loads, use the largest possible bolt circles and use steel washer sizes specified, below:

- **BOTTOM Bolt Circles (13" - 15" Diameter):**
Use a 2-3/4" Dia. x 1/2" TK. washer.
- **For All Mounting Under 13" Diameter:**
See special mounting instructions below.
- **Torque Ground Mounting Nuts to 150 Ft Lbs:**
Shim base Level when required before torquing.
- **TOP Bolt Circles (10-1/2" - 13-1/2" Diameter):**
Use a 2-1/2" Dia. x 3/8" TK. washer or use a 2-3/4" Dia. x 1/2" TK. washer.

BREAKAWAY BASE

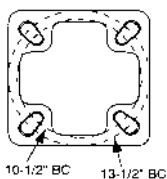
Approved by F.H.W.A. to 1985 AASHTO Requirements

Each transformer base shall be supplied with:

- (4) 1" x 4" Connectors
- Lock Washers
- Flat Washers
- Nuts

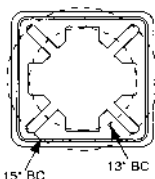
Call the factory for information about hinged doors and plastic doors.

TOP DETAIL



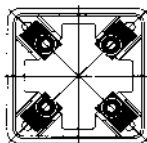
Top Detail For 10-1/2" - 13-1/2" Dia. Bolt Circles (See "CAUTION" label above)

BOTTOM DETAIL



Bottom Detail For 13" - 15" Dia. Bolt Circles (See "CAUTION" label above)

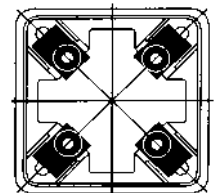
BOTTOM DETAIL (SP) MODIFICATION



Bottom Detail For 10-1/2" - 12-15/16" Dia. Bolt Circles (See special "MOUNTING" instructions)

SPECIAL MOUNTING INSTRUCTIONS

POSITION
(4) 5/8" x 2-3/4" x 4-1/4" rectangular washers along with (4) 2-1/2" Dia. x 3/8" thick washers on top,



for all **BOTTOM MOUNTING** Anchor Bolt Center Lines of 10-1/2" Dia. to 12-15/16" Dia. B.C.

CAUTION
Both washers must be used as a set to approach optimum static load.

Dimensions and Specifications subject to change without notice.

Serving our customers and the industry with quality products since 1973.