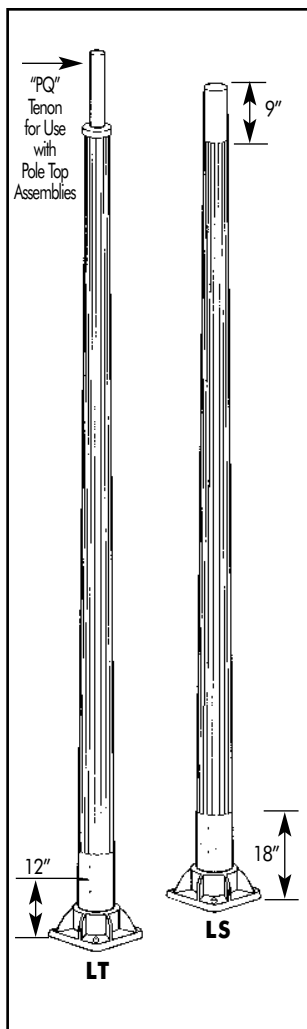


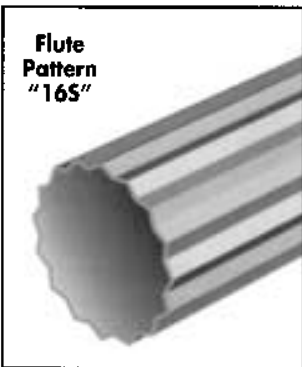


8' to 25' Round Tapered Fluted Aluminum 16 Sharp Flute "16S" Series



SPECIFICATIONS

Pole: Fluted poles are formed from spun tapered seamless 6063 alloy aluminum tubes with a constant linear taper of 0.14"/ft. Shaft is polished with fine grain aluminum oxide cloths, resulting in a high quality, circumferential satin-brushed surface.



Fluting Process: The poles are cold rolled over a precision hardened steel mandrel to form the fluted shape indicated. The fluted shaft has uniform doric flutes. The flutes are formed with rollers in full contact with the material from the top of the crest, through the valley of the flute, to the top of the next crest. The termination of the flutes is no greater than 1-1/2" radii transition into the round section of the pole. Flutes are stopped 18" above the bottom of the shaft to provide a smooth interface surface for the anchor base and "BCAS" base assemblies.

Anchor Base: Anchor base is cast from A356 alloy aluminum. The anchor base casting and shaft are joined by a continuous circumferential weld at the inside bottom of the anchor base. The completed assembly is heat-treated to a T6 temper after all structural welding is completed.

Flush Handhole: A peripherally reinforced flush covered handhole centered 12" above the bottom of the pole is provided. The opening in the 6" diameter pole is 3" x 5". In the 7" and 8" diameter pole, 4" x 6". The handhole is welded tangent to the shaft and both are polished at the same time with fine grain aluminum oxide cloths.

Fixture Mounting: The top of the pole is customized according to the luminaire mounting requirement: a special "PQ" tenon design to support pole top assemblies; two luminaire mounting tenon possibilities; or a non-fluted top section providing a smooth side-mount luminaire arm mounting.

Pole Top Cap: A removable cap is provided in conjunction with drilled shafts for direct lateral luminaire arm attachment.

Anchor Bolt: Anchor bolts are fabricated from carbon steel bar conforming to the requirements of ASTM F1554 Grade 55. The upper 12" of the bolts are hot dip galvanized per ASTM A153. Each anchor bolt is supplied with two hex nuts and two flat washers.

Electrical Ground Connector: To facilitate grounding connection, a tapped hole is drilled into the bottom plate of the casting. The hole is accessible from the access door and is sized for a 3/8" bolt with standard threads.

Finish: The finish for the pole is polyester powder applied coating in accordance with NAFCO Specifications.

CATALOG LOGIC

SERIES	BASE DIAMETER	POLE CROSS SECTION	SHAFT THICKNESS	FLUTE LAYOUT	LENGTH	FIXTURE MOUNTING	FINISH	OPTIONS
FA		16S						
SERIES FA = Fluted Aluminum	POLE CROSS SECTION 16S = 16 Sharp Flute	FLUTE LAYOUT LT = Start 18" from Base Run to Top of Pole LS = Start 18" from Base Stop 9" from Top of Pole	SHAFT THICKNESS 5 = .156" Wall 6 = .188" Wall 8 = .250" Wall	LENGTH 080 = 8'-0" 100 = 10'-0" 120 = 12'-0" 140 = 14'-0" 160 = 16'-0" 180 = 18'-0" 200 = 20'-0" 250 = 25'-0"	FIXTURE MOUNTING PQ = 2 - 3/8" x 12" Tenon for PT Assembly P2 = 2 - 3/8" x 4" Tenon PD = 3" x 3" Tenon C2 = Tenon for Chateau #1, Chateau #2 Twin Arm D2 = Drilling for 2 1 or 2 Luminaires D4 = Drilling for 2 @ 90, 3 @ 90, or 4 @ 90 D3 = Drilling for 3 @ 120 NOTE: Specify fixture type and manufacturer for drilling pattern at time of order.	OPTIONS NC = Fluted Nut Covers HB = Hinge Base No Handhole HBH = Hinge Base with Handhole SL = Special Pole Length (Please Specify)	STANDARD FINISHES WH = White BK = Black MB = Medium Bronze SG = Slate Grey ST = Sandstone SL = Silver BR = Burgandy RD = Red CG = Copper Green BG = Blue Green HG = Hunter Green AB = Azure Blue BV = Dark Blue Violet SC = Special Color (Please Specify)	

① For available base diameter, wall thickness and length combinations, see Dimensional Load Data table that follows.
 ② Hinge base option available on 6" and 7" base diameter only with a maximum height of 20 feet.
 ③ LS is only available in nominal 10', 16', 20' and 25'. Actual pole height is height indicated +11".

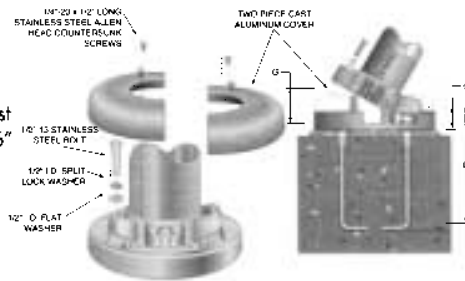
Serving our customers and the industry with quality products since 1973.

8' to 25' Round Tapered Fluted Aluminum 16 Sharp Flute "16S" Series

ANCHOR BASE AND BOLT DIMENSIONS

Optional Hinged Base Cover

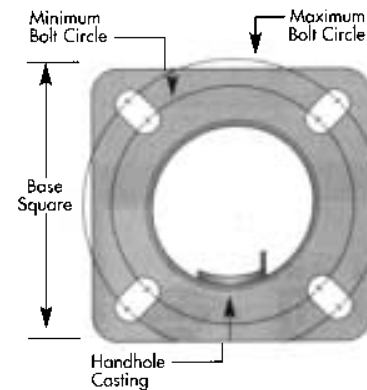
The contemporary smooth designed hinged base cover is cast from aluminum and available in 6" and 7" base O.D. poles with a maximum height of 20".



Flush Reinforced Handhole

The handhole welded tangent to the shaft is polished with fine grain aluminum oxide cloths at the same time as the shaft offering a unique flush design.

Anchor Base Detail



POLE DIA. (IN)	BASE DIMENSIONS (SEE DETAIL)				ANCHOR BOLTS	
	BOLT CIRCLE	BASE SQUARE	CONDUIT OPENING	BASE THK.	BOLT SIZE	BOLT PROJECT.
6"	8-3/4" - 10-1/4"	10-1/4"	5-1/2"	3/4"	3/4" x 17" x 3"	3-1/2"
7"	9-7/8" - 11-1/4"	10-5/8"	6-1/2"	1"	1" x 36" x 3"	4-1/8"
8"	11" - 12-1/8"	11-5/8"	7-1/2"	1"	1" x 36" x 3"	4-1/8"

STANDARD DIMENSIONAL AND LOAD DATA

POLE HEIGHT (FT)	CATALOG NUMBER ^(A)	SHAFT			80 MPH ^(B)		90 MPH ^(B)		100 MPH ^(B)	
		BASE O.D. (IN)	TOP O.D. (IN)	WALL THK. (GA)	MAX EPA (SQ FT)	MAX WEIGHT (LBS)	MAX EPA (SQ FT)	MAX WEIGHT (LBS)	MAX EPA (SQ FT)	MAX WEIGHT (LBS)
8	FA-6-16S-5-(FL)-080-(M)-(F)-(O)	6.00	4.88	.156"	23.2	120	18.2	120	14.8	120
10	FA-6-16S-5-(FL)-100-(M)-(F)-(O)	6.00	4.60	.156"	19.8	120	15.5	120	12.5	120
12	FA-6-16S-5-(FL)-120-(M)-(F)-(O)	6.00	4.32	.156"	13.5	120	10.6	120	8.5	120
14	FA-6-16S-5-(FL)-140-(M)-(F)-(O)	6.00	4.04	.156"	11.5	120	9	120	7.2	120
16	FA-6-16S-5-(FL)-160-(M)-(F)-(O)	6.00	3.76	.156"	9.8	120	7.4	120	5.8	120
16	FA-7-16S-5-(FL)-160-(M)-(F)-(O)	7.00	4.76	.156"	14.4	120	11.2	120	9	120
18	FA-7-16S-5-(FL)-180-(M)-(F)-(O)	7.00	4.48	.156"	12.5	120	9.6	120	7.7	120
20	FA-7-16S-5-(FL)-200-(M)-(F)-(O)	7.00	4.20	.156"	10.7	120	8	120	6.4	120
20	FA-8-16S-6-(FL)-200-(M)-(F)-(O)	8.00	5.20	.188"	19.2	120	15	120	12	120
25	FA-8-16S-6-(FL)-250-(M)-(F)-(O)	8.00	4.50	.188"	13.7	120	10.7	120	8.4	120
16	FA-7-16S-5-(FL)-160-(M)-(F)-(O)	7.00	4.76	.156"	13.3	120	10.4	120	8.3	120
18	FA-7-16S-5-(FL)-180-(M)-(F)-(O)	7.00	4.48	.156"	11.5	120	9	120	7.2	120
20	FA-7-16S-5-(FL)-200-(M)-(F)-(O)	7.00	4.20	.156"	9.1	120	7.7	120	6.1	120
20	FA-8-16S-6-(FL)-200-(M)-(F)-(O)	8.00	5.20	.188"	18	120	14.1	120	11.3	120
25	FA-8-16S-6-(FL)-250-(M)-(F)-(O)	8.00	4.50	.188"	13.4	120	10.3	120	8	120
25	FA-8-16S-8-(FL)-250-(M)-(F)-(O)	8.00	4.50	.250"	19	120	14.8	120	11.8	120

^(A) Replace (FL) with Flute Layout Code, (M) with Fixture Mounting Method Code, (F) with Finish Code, and (O) with Options Code.

^(B) EPA calculations allow for 1.3 Wind Gust Factor. Satisfactory performance of lighting standard is dependent upon the pole(s) being properly attached to a supporting foundation of adequate design. NAFCO does not design or offer recommendations for foundations.

Dimensions and Specifications subject to change without notice.