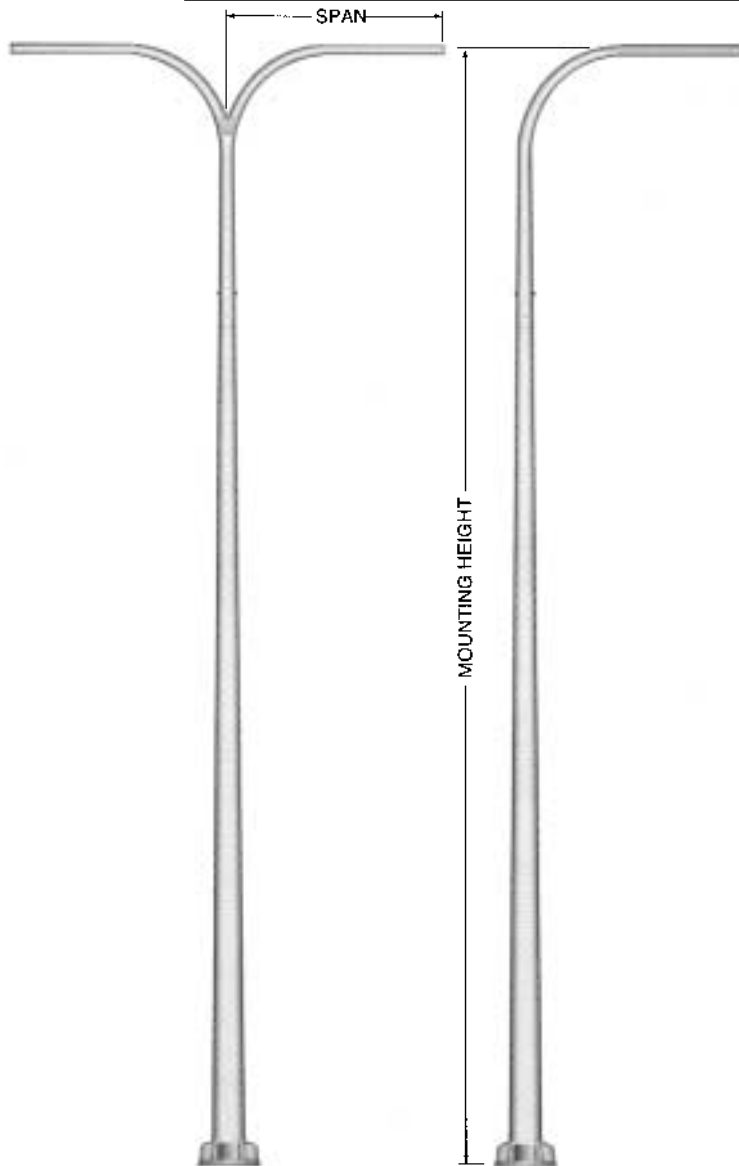


10' Tapered Aluminum Davit Arm Pole



SPECIFICATIONS

The davit arm member is conically tapered from either 4", 4-1/2" or 6" O.D. x .188" wall 6063 alloy extruded aluminum tube. The fixture end of each arm shall be a 2-3/8" O.D. (2" pipe size) tenon. Pole davit arm members have a 6' 6" rise and are available in 4' spans. The davit arm slip fits onto a specially tapered pole top tenon where it is fastened with (2) stainless steel 5/8"-11 UNC through bolts. A 2" I.D. rubber grommet is included for each double davit arm.

The shaft shall be polished with fine grain aluminum oxide cloths, resulting in a high quality circumferential satin brushed finish. Additional architectural finishes available include natural anodized, duranodic and paint.

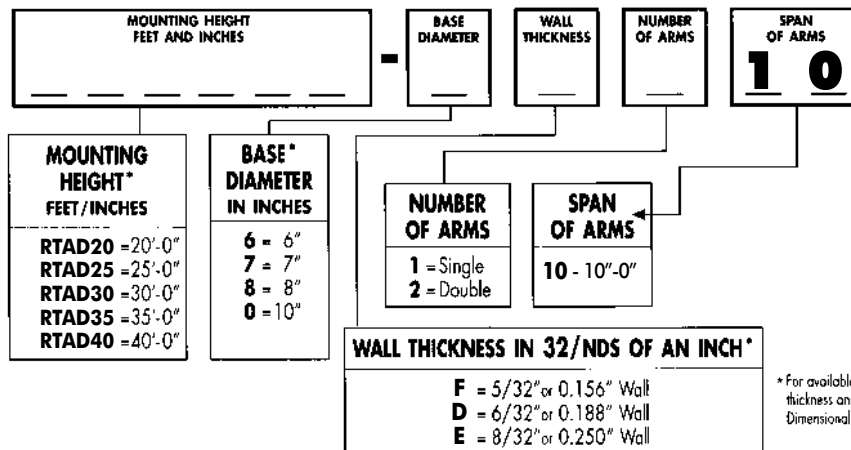
Unless otherwise directed, NAFCO will locate single davit arms 90° to the right of the handhole and double davit arms will be located 90° and 270° from the handhole.

A peripherally reinforced flush covered Handhole is centered 18" above the bottom of the shaft. The opening is 3" x 5" on a 6" diameter pole and 4" x 6" on 7", 8" and 10" diameter poles. An optional 4" x 8" opening is available for 8" and 10" diameter poles.

The anchor base is cast from A356 alloy aluminum and shall be heat treated to a T6 condition. The shaft shall be inserted into the anchor base casting and shall be joined by a continuous circumferential weld at the inside bottom of the shaft. Four pressure fit aluminum nut covers are provided with each anchor base.

Each davit arm pole includes: (4) anchor bolts with (2) nuts and (2) flat washers sized to match the anchor bolt.

CATALOG LOGIC



* For available Base Diameter wall thickness and length combinations, see Dimensional Load Data table that follows.

Serving our customers and the industry with quality products since 1973.

10' Tapered Aluminum Davit Arm Pole

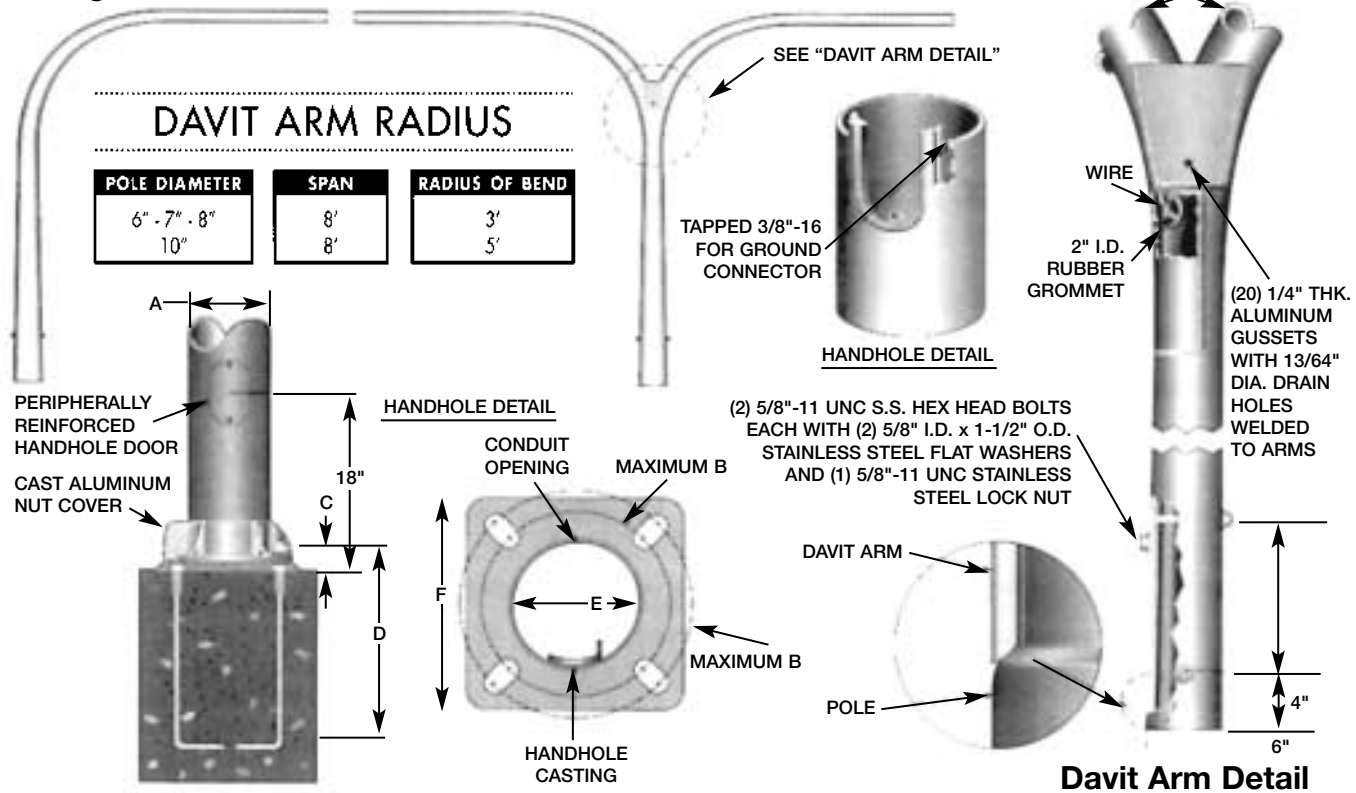
ANCHOR BASE AND BOLT DETAIL

A	B	C	D	E	F
POLE DIAMETER	BOLT CIRCLE	BOLT PROJECTION	BOLT SIZE	CONDUIT OPENING	BASE SIZE
6"	8-3/4" - 10-1/4"	3-1/2"	3/4" x 17"	5-1/2"	10-1/4"
7"	9-7/8" - 11-1/4"	4-1/8"	1" x 36"	6-1/2"	10-5/8"
8"	11 - 12-1/8"	4-1/4"	1" x 36"	7-1/2"	11-5/8"
10"	14 - 1/2"	4-1/2"	1" x 36"	9-1/2"	14-1/2"
* 10"	14 - 1/2"	5"	1-1/4" - 42"	9-1/2"	14-1/2"

* For 250" Wall Thickness Pole. 10" Base Bolt Circles Have ± Tolerances. Contact Factory For Actual Range.

Single Davit Arm

Double Davit Arm



10' FOOT SINGLE DAVIT ARM						
SPAN 120", RISE 78", FIXTURE SLIPFITTER 2-3/8" O.D.						
LUMINAIRE MOUNTING HEIGHT	MAXIMUM ALLOWABLE EFFECTIVE PROJECTED AREA PER ARM IN FT. ²					DAVIT ARM POLE MODEL NUMBER
	70 MPH	80 MPH	90 MPH	100 MPH	110 MPH	
25'	5.5	3.1	1.4	—	—	RTAD25-6F110*
25'	6.0	6.0	4.0	2.5	1.4	RTAD25-7F110
25'	6.0	6.0	6.0	4.9	3.3	RTAD25-8F110
30'	6.0	3.5	1.7	0.5	—	RTAD30-7F110*
30'	6.0	6.0	4.2	2.6	1.3	RTAD30-8F110
30'	6.0	6.0	6.0	4.2	2.7	RTAD30-8D110
35'	6.0	3.6	1.8	0.5	—	RTAD35-8F110
35'	6.0	5.8	3.5	2.0	0.7	RTAD35-8D110
35'	6.0	6.0	6.0	4.7	3.0	RTAD35-8E110
40'	3.5	1.2	—	—	—	RTAD40-8F110*
40'	6.0	3.0	1.2	—	—	RTAD40-8D110
40'	6.0	6.0	4.2	2.4	1.0	RTAD40-8E110
40'	6.0	6.0	6.0	3.7	1.8	RTAD40-0D110

10' FOOT DOUBLE DAVIT ARM						
SPAN 120", RISE 78", FIXTURE SLIPFITTER 2-3/8" O.D.						
LUMINAIRE MOUNTING HEIGHT	MAXIMUM ALLOWABLE EFFECTIVE PROJECTED AREA PER ARM IN FT. ²					DAVIT ARM POLE MODEL NUMBER
	70 MPH	80 MPH	90 MPH	100 MPH	110 MPH	
25'	4.7	2.4	—	—	—	RTAD25-7F210
25'	7.1	4.7	2.8	—	—	RTAD25-8F210
25'	7.1	6.8	4.5	2.7	1.4	RTAD25-8D210
30'	2.0	—	—	—	—	RTAD30-7F210
30'	4.6	2.2	—	—	—	RTAD30-8F210
30'	6.7	3.9	2.0	0.7	—	RTAD30-8D210
30'	7.1	7.1	4.6	2.7	1.4	RTAD30-8E210
35'	2.0	—	—	—	—	RTAD35-8F210
35'	3.9	1.6	—	—	—	RTAD35-8D210
35'	7.1	4.2	2.2	—	—	RTAD35-8E210
35'	7.1	5.9	3.4	1.4	—	RTAD35-0D210
40'	4.5	2.0	—	—	—	RTAD40-8E210
40'	6.4	3.4	1.3	—	—	RTAD40-0D210
40'	7.1	7.1	4.2	2.1	—	RTAD40-0E210

* Maximum Fixture Weight 55 Lbs.

Dimensions and Specifications subject to change without notice.