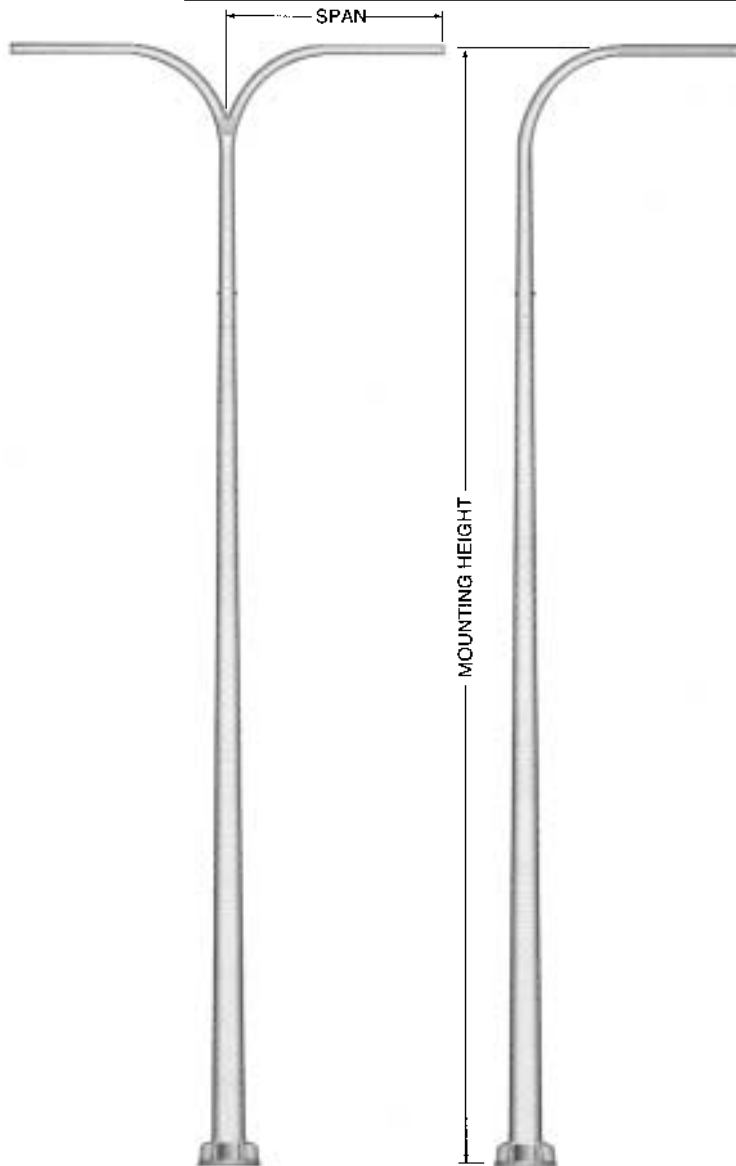


4' Tapered Aluminum Davit Arm Pole



SPECIFICATIONS

The davit arm member is conically tapered from either 4", 4-1/2" or 6" O.D. x .188" wall 6063 alloy extruded aluminum tube. The fixture end of each arm shall be a 2-3/8" O.D. (2" pipe size) tenon. Pole davit arm members have a 6' 6" rise and are available in 4' spans. The davit arm slip fits onto a specially tapered pole top tenon where it is fastened with (2) stainless steel 5/8"-11 UNC through bolts. A 2" I.D. rubber grommet is included for each double davit arm.

The shaft shall be polished with fine grain aluminum oxide cloths, resulting in a high quality circumferential satin brushed finish. Additional architectural finishes available include natural anodized, duranodic and paint.

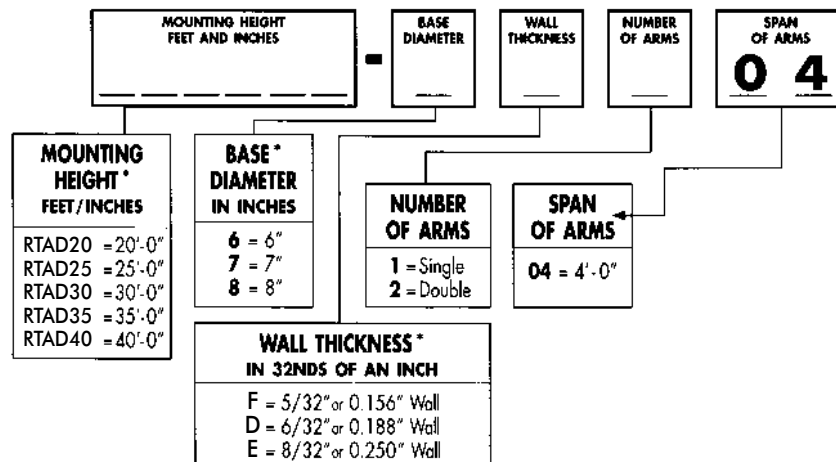
Unless otherwise directed, NAFCO will locate single davit arms 90° to the right of the handhole and double davit arms will be located 90° and 270° from the handhole.

A peripherally reinforced flush covered Handhole is centered 18" above the bottom of the shaft. The opening is 3" x 5" on a 6" diameter pole and 4" x 6" on 7", 8" and 10" diameter poles. An optional 4" x 8" opening is available for 8" and 10" diameter poles.

The anchor base is cast from A356 alloy aluminum and shall be heat treated to a T6 condition. The shaft shall be inserted into the anchor base casting and shall be joined by a continuous circumferential weld at the inside bottom of the shaft. Four pressure fit aluminum nut covers are provided with each anchor base.

Each davit arm pole includes: (4) anchor bolts with (2) nuts and (2) flat washers sized to match the anchor bolt.

CATALOG LOGIC



* For available Base Diameter, Wall Thickness and Length Combinations, see Dimensional Load Data table that follows.

Serving our customers and the industry with quality products since 1973.

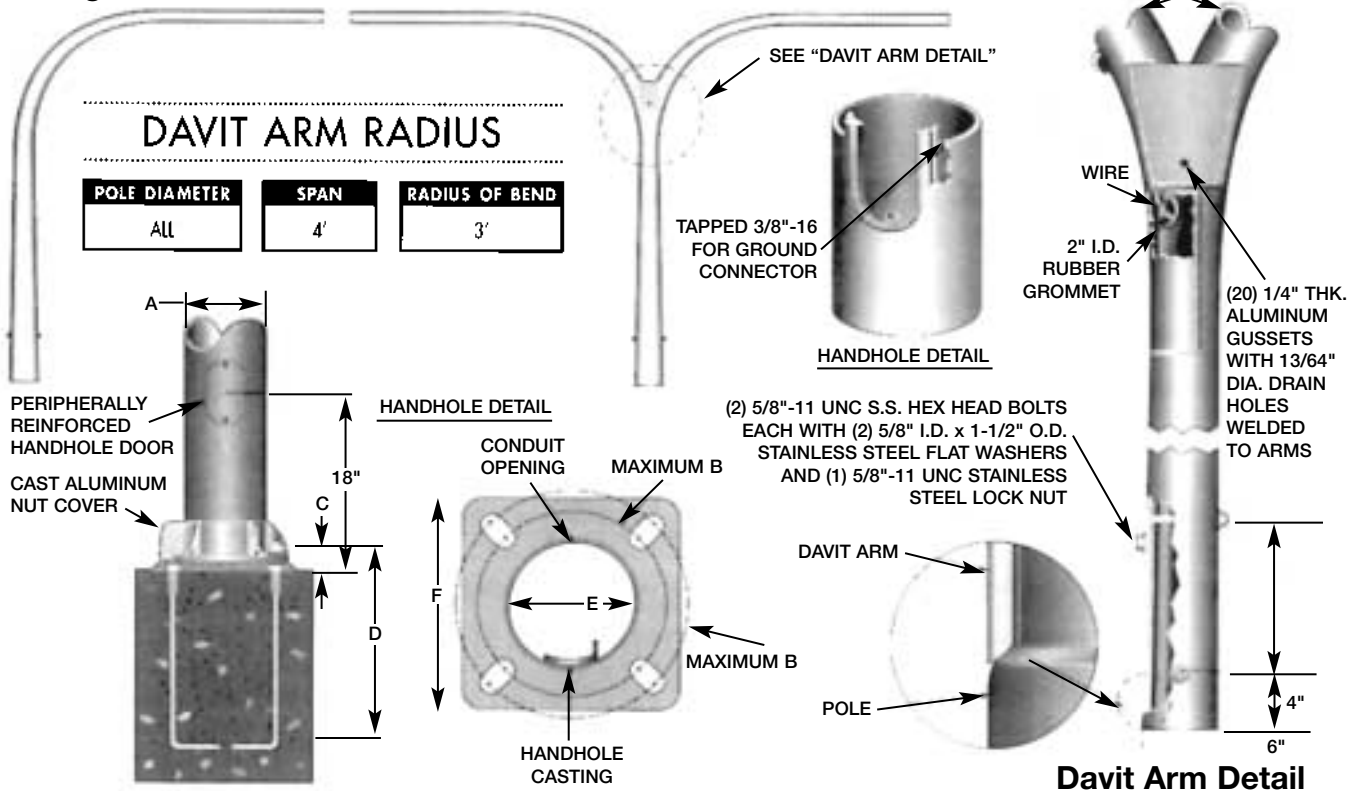
4' Tapered Aluminum Davit Arm Pole

ANCHOR BASE AND BOLT DETAIL

| A | B | C | D | E | F |
|---------------|------------------|-----------------|------------|-----------------|-----------|
| POLE DIAMETER | BOLT CIRCLE | BOLT PROJECTION | BOLT SIZE | CONDUIT OPENING | BASE SIZE |
| 6" | 8-3/4" - 10-1/4" | 3-1/2" | 3/4" x 17" | 5-1/2" | 10-1/4" |
| 7" | 9-7/8" - 11-1/4" | 4-1/8" | 1" x 36" | 6-1/2" | 10-5/8" |
| 8" | 11" - 12-1/8" | 4-1/4" | 1" x 36" | 7-1/2" | 11-5/8" |

Single Davit Arm

Double Davit Arm



| 4' FOOT SINGLE DAVIT ARM | | | | | | |
|--|--|--------|--------|---------|---------|-----------------------------|
| SPAN 48", RISE 78", FIXTURE SLIPFITTER 2-3/8" O.D. | | | | | | |
| LUMINAIRE MOUNTING HEIGHT | MAXIMUM ALLOWABLE EFFECTIVE PROJECTED AREA PER ARM IN FT. ² | | | | | DAVIT ARM POLE MODEL NUMBER |
| | 70 MPH | 80 MPH | 90 MPH | 100 MPH | 110 MPH | |
| 20' | 6.0 | 6.0 | 6.0 | 4.5 | 3.3 | RTAD20-6F104 |
| 25' | 6.0 | 5.0 | 3.1 | 2.0 | 1.1 | RTAD25-6F104 |
| 25' | 6.0 | 6.0 | 6.0 | 4.4 | 3.1 | RTAD25-7F104 |
| 30' | 4.3 | 2.2 | 0.8 | — | — | RTAD30-6F104 |
| 30' | 6.0 | 5.3 | 3.3 | 2.0 | 1.1 | RTAD30-7F104 |
| 30' | 6.0 | 6.0 | 6.0 | 4.3 | 3.0 | RTAD30-8F104 |
| 35' | 4.9 | 2.5 | 1.0 | — | — | RTAD35-7F104 |
| 35' | 6.0 | 5.4 | 3.4 | 2.1 | 1.0 | RTAD35-8F104 |
| 35' | 6.0 | 6.0 | 5.3 | 3.6 | 2.3 | RTAD35-8D104 |
| 35' | 6.0 | 6.0 | 6.0 | 6.0 | 4.7 | RTAD35-8E104 |
| 40' | 5.2 | 2.7 | 1.2 | — | — | RTAD40-8F104 |
| 40' | 6.0 | 4.8 | 2.8 | 1.5 | 0.5 | RTAD40-8D104 |
| 40' | 6.0 | 6.0 | 5.9 | 4.0 | 2.6 | RTAD40-8E104 |

| 4' FOOT DOUBLE DAVIT ARM | | | | | | |
|--|--|--------|--------|---------|---------|-----------------------------|
| SPAN 48", RISE 78", FIXTURE SLIPFITTER 2-3/8" O.D. | | | | | | |
| LUMINAIRE MOUNTING HEIGHT | MAXIMUM ALLOWABLE EFFECTIVE PROJECTED AREA PER ARM IN FT. ² | | | | | DAVIT ARM POLE MODEL NUMBER |
| | 70 MPH | 80 MPH | 90 MPH | 100 MPH | 110 MPH | |
| 20' | 6.8 | 4.5 | 2.9 | 2.0 | 1.2 | RTAD20-6F204 |
| 20' | 7.1 | 7.1 | 5.3 | 3.9 | 2.7 | RTAD20-7F204 |
| 25' | 3.9 | 2.1 | 1.1 | — | — | RTAD25-6F204 |
| 25' | 6.8 | 4.5 | 2.8 | 1.8 | 1.1 | RTAD25-7F204 |
| 30' | 4.1 | 2.2 | — | — | — | RTAD30-7F204 |
| 30' | 6.8 | 4.4 | 2.8 | 1.8 | 0.9 | RTAD30-8F204 |
| 30' | 7.1 | 6.1 | 4.2 | 2.8 | 1.8 | RTAD30-8D204 |
| 35' | 4.1 | 2.4 | 1.2 | — | — | RTAD35-8F204 |
| 35' | 6.0 | 3.8 | 2.2 | 1.2 | — | RTAD35-8D204 |
| 35' | 7.1 | 6.5 | 4.4 | 2.9 | 1.9 | RTAD35-8E204 |
| 40' | 3.6 | 1.9 | 0.7 | — | — | RTAD40-8D204 |
| 40' | 6.7 | 4.1 | 2.6 | 1.4 | 0.6 | RTAD40-8E204 |

Maximum Fixture Weight 75 lbs.

Dimensions and Specifications subject to change without notice.