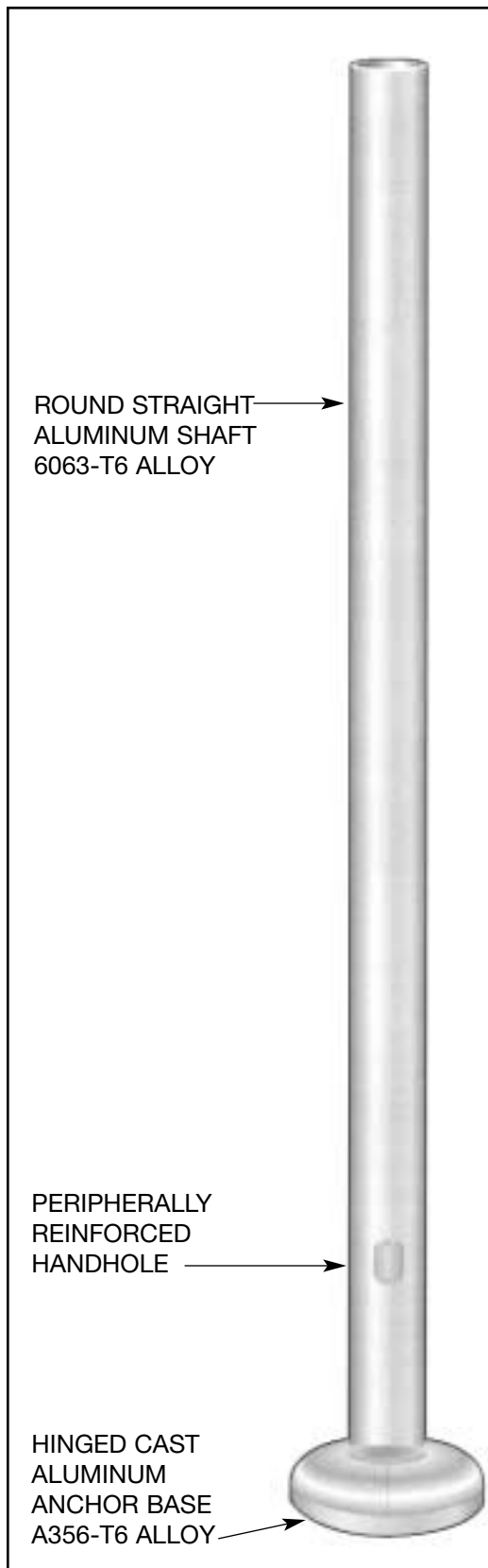


8' to 20' Round Straight Aluminum Hinged Base



Shaft: The shaft shall be extruded from 6063 Alloy Aluminum and is heat treated after fabrication to produce a T6 temper. The shaft will be polished with fine grain aluminum oxide cloths producing a high quality circumferential satin brushed finish. Each pole will be wrapped with neutral PH Krinkle/Kraft paper for protection in shipment.

Hinged Anchor Base: The hinged anchor base is cast from A356 Alloy Aluminum. The shaft shall be inserted into the tilting section of the hinged base and shall be joined to it by continuous circumferential welds at the outside top and inside bottom of that section. The tilting and anchored sections of the hinged base shall be joined by a 3/4" diameter solid aluminum pivot rod. The tilting section of the hinged base shall be held in a vertical position by (3) 1/2" - 13 x 2" stainless steel hex head bolts. These bolts shall attach to stainless steel inserts cast into the aluminum base. A cast aluminum 2-piece cover is included. The completed assembly shall be heat treated to a T6 condition.

Handholes: Peripherally reinforced flush covered handhole centered 18" above the bottom of the pole. Opening for 4" poles is 2 3/8" x 4 1/2", and 5" & 6" poles have a 3" x 5" opening.

Anchor Bolts: Each pole to include (4) steel hot dipped galvanized bolts each to have (2) nuts and (2) flat washers.

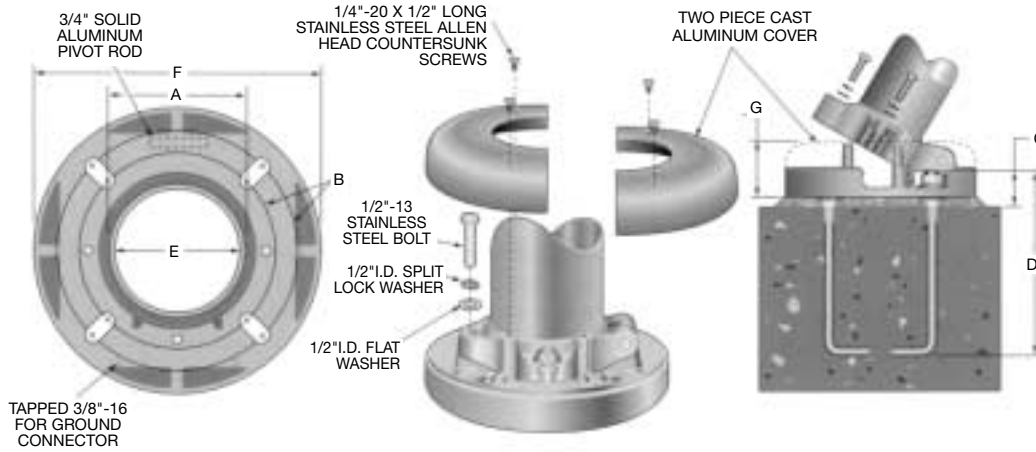
Finishes: Anodized or painted finishes can be provided in addition to the standard brushed aluminum.

Options and Accessories: Vibration dampeners, gasketed handhole cover, electrical outlets, tenons or drilling.

*Serving our customers and
the industry with quality
products since 1973.*

8' to 20' Round Straight Aluminum Hinged Base

A	B	C	D	E	CONDUIT PROJECTION	F	G
POLE DIAMETER	BOLT CIRCLE	BOLT PROJECTION	BOLT SIZE	CONDUIT OPENING		DIAMETER	HEIGHT
4"	8-1/2" - 10"	3-1/2"	3/4" x 17"	3-1/2"	1-1/2"	12-5/8"	3-1/16"
5"	8-1/2" - 10"	3-1/2"	3/4" x 17"	4-1/2"	1-1/2"	12-5/8"	3-1/16"
6"	8-1/2" - 10"	3-1/2"	3/4" x 17"	5-1/2"	1-1/2"	12-5/8"	3-1/16"



TYPICAL WEIGHT AND ALLOWABLE SIZE OF LUMINAIRES*							DIMENSIONS OF POLES			
NOMINAL MOUNTING HEIGHT	TYPICAL LUMINAIRE WT (LBS.)	EFFECTIVE PROJECTED AREA IN SQUARE FEET AT					POLE HEIGHT	OUTSIDE DIAMETER	WALL	MODEL NUMBER**
		70 MPH	80 MPH	90 MPH	100 MPH	110 MPH				
8'	50	15.1	11.3	8.6	6.8	5.6	8'	4"	.125"	RSA08-404CSH
10'	50	11.2	8.2	6.1	4.7	3.8	10'	4"	.125"	RSA10-404CSH
10'	50	18.5	13.8	10.8	8.6	7	10'	5"	.125"	RSA10-505CSH
12'	50	8.5	6.1	4.4	3.3	2.6	12'	4"	.125"	RSA12-404CSH
12'	50	14.4	10.5	8.2	6.5	5.3	12'	5"	.125"	RSA12-505CSH
12'	50	18.2	13.5	10.5	8.4	6.8	12'	5"	.156"	RSA12-505FSH
12'	50	22	16.4	12.8	10.2	8.3	12'	5"	.188"	RSA12-505DSH
14'	50	6.5	4.4	3	2.1	1.6	14'	4"	.125"	RSA14-404CSH
14'	50	11.3	8.1	6.2	4.9	3.9	14'	5"	.125"	RSA14-505CSH
14'	50	14.5	10.6	8.2	6.5	5.2	14'	5"	.156"	RSA14-505FSH
14'	50	17.7	13	10.1	8	6.5	14'	5"	.188"	RSA14-505DSH
16'	50	4.9	3.1	1.9	1.2	0.8	16'	4"	.125"	RSA16-404CSH
16'	50	8.9	6.2	4.7	3.6	2.8	16'	5"	.125"	RSA16-505CSH
16'	50	11.6	8.3	6.3	5	4	16'	5"	.156"	RSA16-505FSH
16'	50	14.4	10.4	8	6.3	5.1	16'	5"	.188"	RSA16-505DSH
16'	50	18.4	13.8	10.7	8.5	6.9	16'	6"	.156"	RSA16-606FSH
16'	50	22.5	17	13.2	10.6	8.6	16'	6"	.188"	RSA16-606DSH
18'	75	6.8	4.5	3.3	2.5	1.9	18'	5"	.125"	RSA18-505CSH
18'	75	9.2	6.4	4.8	3.7	2.9	18'	5"	.156"	RSA18-505FSH
18'	75	11.6	8.2	6.2	4.9	3.9	18'	5"	.188"	RSA18-505DSH
18'	75	18.8	14.1	10.9	8.6	7	18'	6"	.188"	RSA18-606DSH
20'	75	15.1	3.2	2.2	1.6	1.1	20'	5"	.125"	RSA20-505CSH
20'	75	7.3	4.8	3.5	2.6	2	20'	5"	.156"	RSA20-505FSH
20'	75	9.4	6.4	4.8	3.7	2.9	20'	5"	.188"	RSA20-505DSH
20'	75	12.5	9.2	7	5.5	4.4	20'	6"	.156"	RSA20-606FSH
20'	75	15.7	11.7	9	7.1	5.7	20'	6"	.188"	RSA20-606DSH

CAUTION: Raising or lowering of the pole requires adequate preparation. Do not underestimate the force required to raise or lower poles with heavy luminaires at the top.

* EPA calculations are based on a 1.3 Gust Factor. Variations from pole sizes listed above, available upon inquiry at the factory. Satisfactory performance of lighting poles is dependent upon the pole being properly attached to a supporting foundation of adequate design. NAFCO does not design or offer recommendations for foundations.

** Model number does not include mounting options or finish designation.

Dimensions and Specifications subject to change without notice.